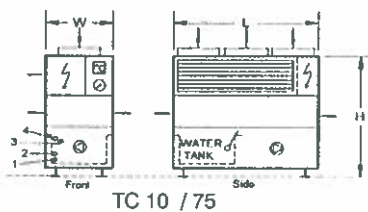
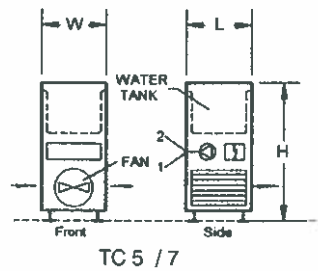
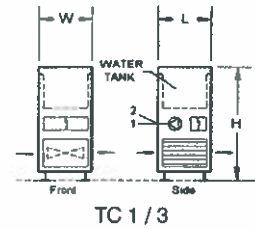
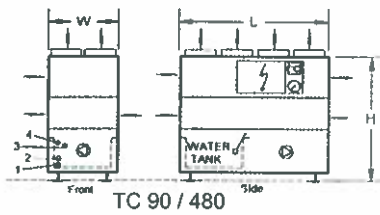


COMPACT COOL COOLING UNIT
 MANUFACTURERS (PTY) LTD.
 Reg. No: 197600414707
 60 - 3 rd Street, Booysens Reserve, 2091
 P. O. Box 1697, Southdale, 2135, Johannesburg
 Tel: +27 (011) 835-1131/2/3
 Fax: +27 (011) 835-2386
 e-mail: sales@compactcool.com
 website: www.compactcool.com
 ISO 9001:2008
 Proudly South African™ member
 BEE Certified

WATER CHILLERS Type TC



- = Air Flow
- ⊕ = Water Pump
- ⊠ = Temperature Controller/Display
- ⊙ = Pressure Gauge
- ⊞ = Control Panel
- 1 = Return Water
- 2 = Supply Water
- 3 = Tank Over Flow
- 4 = Make Up Water



(Air Cooled Tank Chillers)

TYPICAL DIMENSIONS AND SPECIFICATIONS

(SUBJECT TO ALTERATION WITHOUT NOTICE)

Model	Cooling capacity at 32°C ambient & water leaving °C			Condenser fan(s)	Compressor(s) power input max.	Tank volume	Water flow at 250 kPa pump head	Standard pump	Current max.	Dimensions width x length x height	Mass approx machine operating	Water connections tank		
	5	10	15									In	Over-flow	Out
TC	kW			No. x kW-Ø mm	No. x kW	Litre	m ³ /h	kW	A	mm	kg	mm NB		
1	1.1	1.2	1.2	1x0.11-300	1.0	40	0.2	0.3	7	500 x 500 x 1460	70	100	15	
2	2.3	2.6	2.6	1x0.11-300	1.5	40	0.4	0.3	9	500 x 500 x 1460	80	110	15	
3	3.5	4	4	1x0.24-350	2.1		0.6	0.33	12		110	190		
5	6	7	7	1x0.37-400	2.6	100	1	0.37	9	640 x 640 x 1460	140	220	25	
7	8	9.5	9.5	1x0.37-400	3.4		1.4	0.35	10		150	230		
10	12	13	13	1x0.64-500	4.4		2		13		500	800		
12	14	15	15	1x0.64-500	7.2		2.4	0.75	16		530	830	40	
15	19	22	22	1x0.55-670	8.2	290	3.2		19	790 x 1480 x 1970	550	850		
20	23	27	27	1x0.55-670	10		4		24		600	900		
25	29	31	31	2x0.64-500	11.5		5	1.1	29		650	950	25	15
30	35	38	38	2x0.55-670	15		6	1.5	39		800	1300	50	
40	48	54	54	3x0.55-670	2 x 10	500	8.3	1.5	50	790 x 2720 x 1970	900	1400		
50	58	62	62	3x0.55-670	2 x 11.5		10	2.2	56		950	1450		
60	70	76	76	3x0.55-670	2 x 15	950	12	2.2	75	1280 x 2720 x 1970	1100	2000		
75	87	93	93	3x0.55-670	3 x 11.5	950	15	3	79	1280 x 2720 x 1970	1150	2050	65	
90	105	114	114	5x0.55-670	3 x 15	1200	18	3	110	1350 x 4360 x 2600	1800	3200		
120	140	152	152	6x0.55-670	4 x 15	1400	24	4	147		2000	3400		
150	175	190	190	7x0.55-670	5 x 15	2000	30	4	183	2300 x 4360 x 2600	2500	4400	80	
180	210	228	228	8x0.55-670	6 x 15	2500	36	4	218	2300 x 5880 x 2600	3050	5700	80	
210	245	266	266	10x0.55-670	7 x 15	2500	42	5.5	256		3200	6000	100	
240	280	304	304	12x0.55-670	8 x 15 or 4 x 30	2900	48	7.5	292		3700	6600	100	
270	315	342	342	14x0.55-670	9 x 15 or 4 x 30	4000	54	7.5	325	2300 x 5880 x 2600	4100	8100	100	
300	350	380	380	16x0.55-670	10 x 15 or 5 x 15	4000	60	7.5	358	2300 x 5880 x 2600	4300	8300	100	
330	385	418	418	17x0.55-670	11 x 15 or 5 x 30	4000	66	9.2	395	2300 x 5880 x 2600	4500	8500	100	
360	420	456	456	18x0.55-670	12 x 15 or 6 x 30	4500	72	11	430	2300 x 6800 x 2600	5000	9300	125	
420	490	530	530	22x0.55-670	7 x 30	5500	84	11	500	2300 x 9720 x 2600	5800	10800	125	
480	560	605	605	24x0.55-670	8 x 30	5500	96	15	570	2300 x 9720 x 2600	6200	11500	125	

COMPONENTS

- Reciprocating compressor(s).
- Condenser coil(s) with copper tubes mechanically expanded into aluminium fins.
- Axial impeller fan(s).
- Stainless steel grade 304 tank insulated with high density polyethylene foam.
- Direct expansion open type evaporator in copper.
- Close-coupled centrifugal pump.
- Electrical panel, incorporating:
 - mains isolator
 - circuit breaker(s)
 - contactor(s) and overload(s)
 - compressor anti-cycle timer (TC 7/480)
- On/off switch
- Signal lamps for main
- Electronic multi-stage (TC 40/480) thermostat for water temperature setting with lead/lag control of compressor sequence.
- Mechanical safety thermostat as protection

against high or low water temperature.

- Tank water level safety switch
- Digital indication of tank (water leaving) temperature.
- Water pump pressure gauge.
- Compressor hour meters (TC 60/480)
- Make-up ball valve in water tank (TC 10/480).
- Suction strainer of pump.
- Isolating valves on water tank inlet and outlet (TC 10/480).
- Low ambient control by condenser fan speed control (TC 10/25) and cycling of fans (TC 30/480).
- Adjustable feet

INSTALLATION

- All units are assembled, internally wired and charged with refrigerant R22 at the factory.
- All that is required on site are water pipe connections and wiring to the mains power supply.

OPTIONS

- Flashing alarm light.
- Compressor hour meter (TC 1/50).
- Suction and discharge gauge for each compressor.
- Centrifugal type condenser fan(s) for duct application. Condenser heat may be diverted outside and during cold weather warm air can be diverted inside for space heating.
- Castors for easy manoeuvrability (TC 1/75).
- Single phase and low voltage protection.
- Stand-by pump plus pump selector switch.
- Automatic change-over of pump in the event of pump failure.
- Other pump models for different flow and pressure.
- Condenser with copper fins.
- Standard condenser with epoxy coated fins
- Frame hot dip galvanized.

- Other refrigerant.
- Scroll compressor.

FEATURE

- Units are self-contained and compact for easy installation
- Test run before delivery.
- Frame constructed from heavy gauge square tube. Galvanized covers removable for easy access to any part.
- Textured electrostatic powder coating finish.
- Large water tank to reduce stop/starts of compressor(s).
- Models TC 40/480 have multiple independent refrigeration systems.
- Units are designed for continuous operation at high ambient temperature.
- Because of the evaporator design the units can operate within a wide water temperature range.
- Manufactured in South Africa.